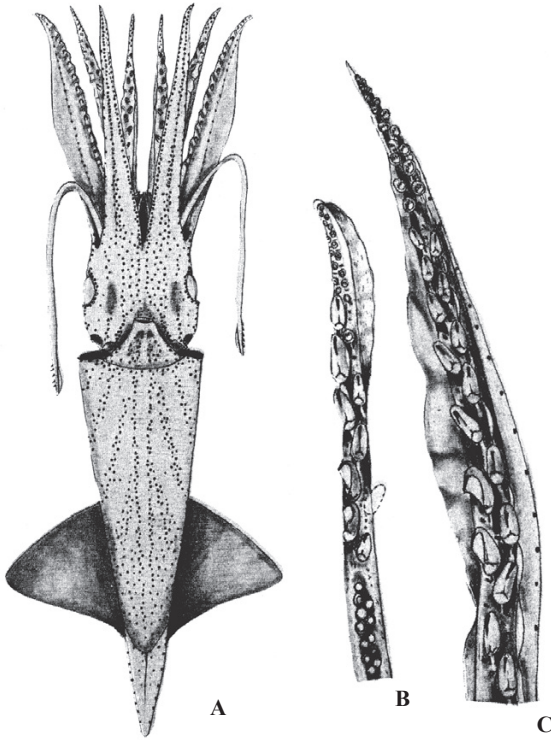
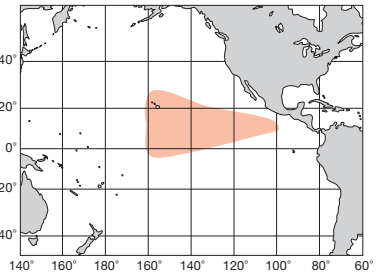


太平洋 Pacific Ocean

ML 58mm. 外套膜は同属の他種同様にゼラチン質の尾部で終わる。鰭長は外套長の70%前後、幅は60%。外套発光器は腹中線には無く、両側に斜行する3条があるが、後部では不規則に分布する。腕には2列の鉤があるが、先端では吸盤となる。交接腕は腹側の保護膜が波打って広がる。触腕は弱い。固着器は4~5個の吸盤、4~7個の肉瘤がほぼ縦に並ぶ。掌部は広がらず、腹列に4~5個、背列に3~4個の鉤があり、先端部には11~17個の小吸盤が2列に並ぶ。眼球の発光器は9個で、両端の2個は離れてやや大きく、7個は同大で密着する。ハワイ~ライン諸島。

Mantle terminated in gelatinous tail like other members of genus. Fin length about 70%, and fin width 60% of ML, respectively. Mantle photophores devoid in mid-ventral strip, but forming three oblique rows that tend to diffuse in posterior part. Arms with two rows of hooks followed by minute suckers distally. Hectocotylized arm with broadened and undulating protective membrane on ventral side. Tentacle weak. Fixing apparatus with 4-5 suckers and 4-7 pads that are arranged almost longitudinally. Manus not expanded, with 4-5 ventral hooks and 3-4 dorsal hooks. Dactylus suckers 11-17 in two rows. Photophores on eyeball nine in all: Both terminal ones large and separated from other seven, which are equal in size and contact with each other. Hawaii to the Line Islands.

[A. 腹面 (♂50mm) ; B. 交接腕 ; C. 触腕]



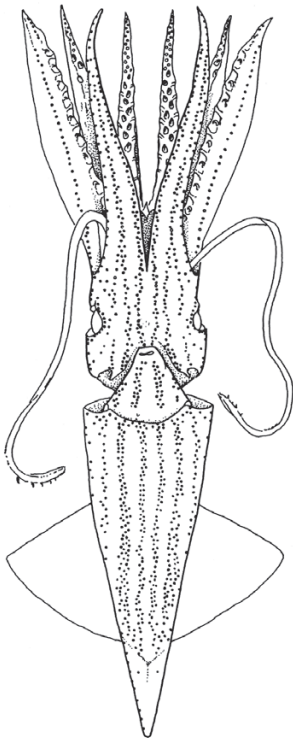
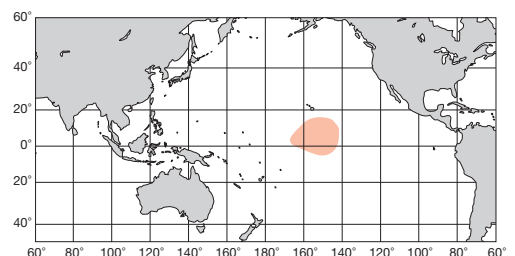
A-C : Burgess (1982)

太平洋 Pacific Ocean

ML 80mm. 外套膜上には8列の発光器列をもつ。頭部腹面には4条の細い発光器列をもつ。鰭長は外套長の65~70%、幅は70~80%。腕には2列16~32個の鉤と18~38個の小吸盤をもつ。交接腕は腹側の保護膜がやや広がる程度。触腕は細く退化的。固着器吸盤は3~6個、肉瘤は3~5個。掌部に2列9~11個前後の鉤と先端に2列11~17個の小吸盤をもつ。眼の発光器は9~10個で、両端の2個は離れている。熱帯中央太平洋。

Mantle photophore arranged in eight rows. Ventral head with quadriserial photophores. Fin length 65-70% and fin width 70-80% of ML, respectively. Arms with 16-32 hooks and 18-38 distal suckers in two rows. Hectocotylized arm with slightly expanded protective membrane. Tentacle very weak. Fixing apparatus with 3-6 suckers and 3-5 pads. Manus with 9-11 hooks and dactylus with 16-17 suckers in two rows. Eyeball photophores 9-10, of which both terminal organs are separated apart from mesial cluster of 7-8 photophores. Tropical Central Pacific.

[A. 腹面]



A : 土屋 (2000)