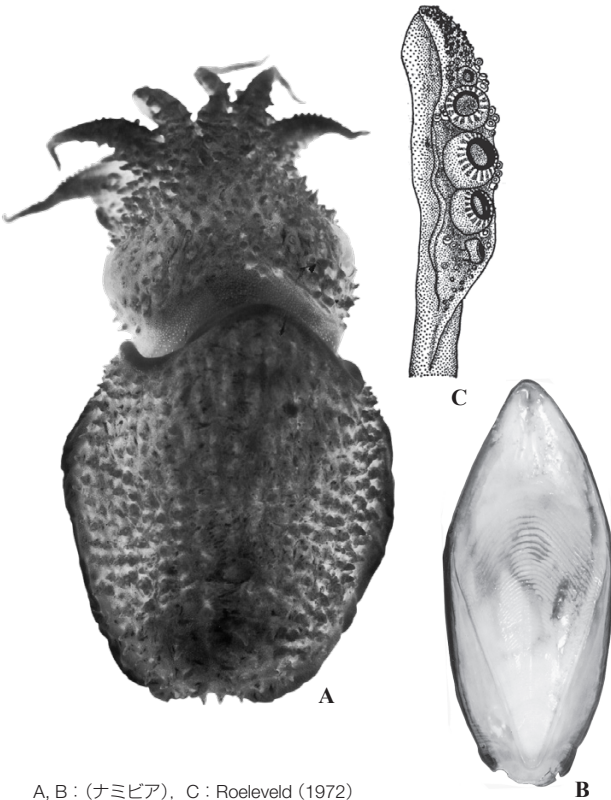


南アフリカ South Africa

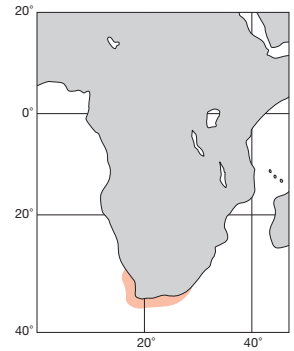
ML 14 cm. 外套は卵楕円形で、背側には肉質の疣状突起があり、頭部背面にまで続く。腹側は皺域がある。紫褐色。左IV腕は交接腕化し13列の正常吸盤列に続く8列は縮小し中央に空地が生じる。触腕は吸盤8列、中央の4吸盤が著しく拡大する。貝殻は幅は長さの半分。内円錐は外円錐に癒着し、棘は短く瘤状。南アフリカの水深50~200m。

Body brownish purple. Mantle oval, heavily tuberculated dorsally (to dorsal head) and with a wrinkled patches on ventrum. Left arm IV hectocotyized with 13 normal sucker rows, following eight rows diminishing in size leaving bare space in middle. Tentacular suckers in eight rows, with four enlarged mesial suckers. Shell oval, SW about 50% of SL. Inner cone fused with outer cone, without spine but a small knob present. South Africa, 50-200 m depth.

[A. 背面 (60mm) ; B. 貝殻腹面 ; C. 触腕]



A, B : (ナミビア), C : Roeleveld (1972)

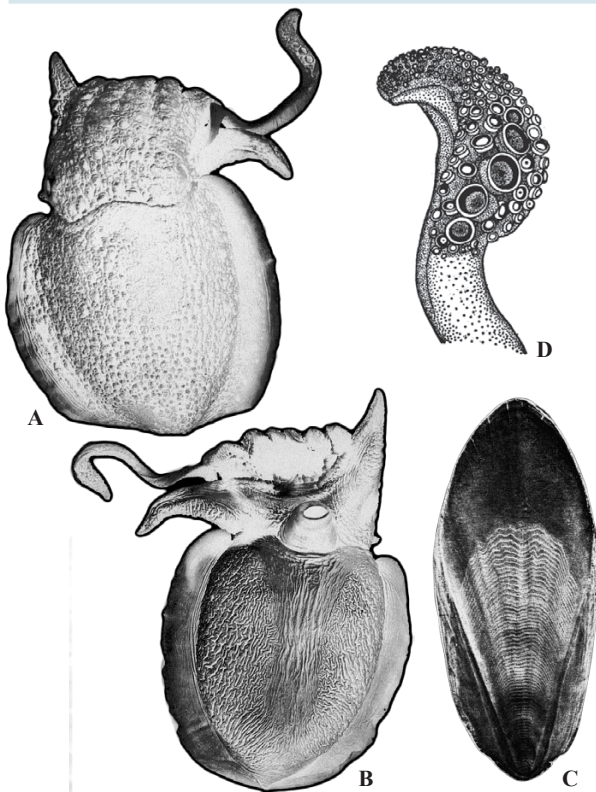


南アフリカ South Africa

ML 90 mm. 外套膜・頭部・腕の背側は疣状突起に密に被われる。外套膜腹面には対になった皺状のパッチがあり、同様の皺がIV腕の腹面にもある。交接腕の基部では背列吸盤は正常であるが腹列吸盤の間は広く空く。触腕吸盤は5列で、中央列の数個が拡大する。貝殻は薄く中肋は不明瞭。横線面は広く、前縁は逆U字型の弧状。内円錐は外円錐に癒着。棘は無い。南アフリカ、潮間帯。付記：体表が疣状突起に被われる点、前種ガマノセコウイカに似るが、本種のI~III腕は前種のそれより細まり、貝殻は薄く(殻の厚さは殻長の4~9%、前種では8~12%)中肋も不明瞭で、横線面に溝がなく、棘も瘤も欠く点で異なる。

Dorsal mantle, head and arms ornamented by dense tubercles. A pair of wrinkled patches present on ventral mantle and similar wrinkles on Arm IV. In hectocotyized arm, proximal suckers in dorsal rows normal but those in ventral rows spaced. Tentacular suckers in five rows with several enlarged ones in mesial row. Shell thin with indistinct mid-rib. Striated zone broad with inverted U-shaped locular boundary. Inner cone fused with outer cone. Neither spine nor knob present. South Africa, intertidal zone. This cuttlefish differs from *S. papillata* in having more attenuated arms, and very thin shell (thickness 4-9% SL vs 8-12% in *S. papillata*) with indistinct mid-rib, no ventral longitudinal furrow and lacks spine or knob.

[A. 背面 (♀64 mm) ; B. 同腹面 ; C. 貝殻腹面 (55mm) ; D. 触腕]



A, B : Adam & Rees (1966), C, D : Roeleveld (1972)

